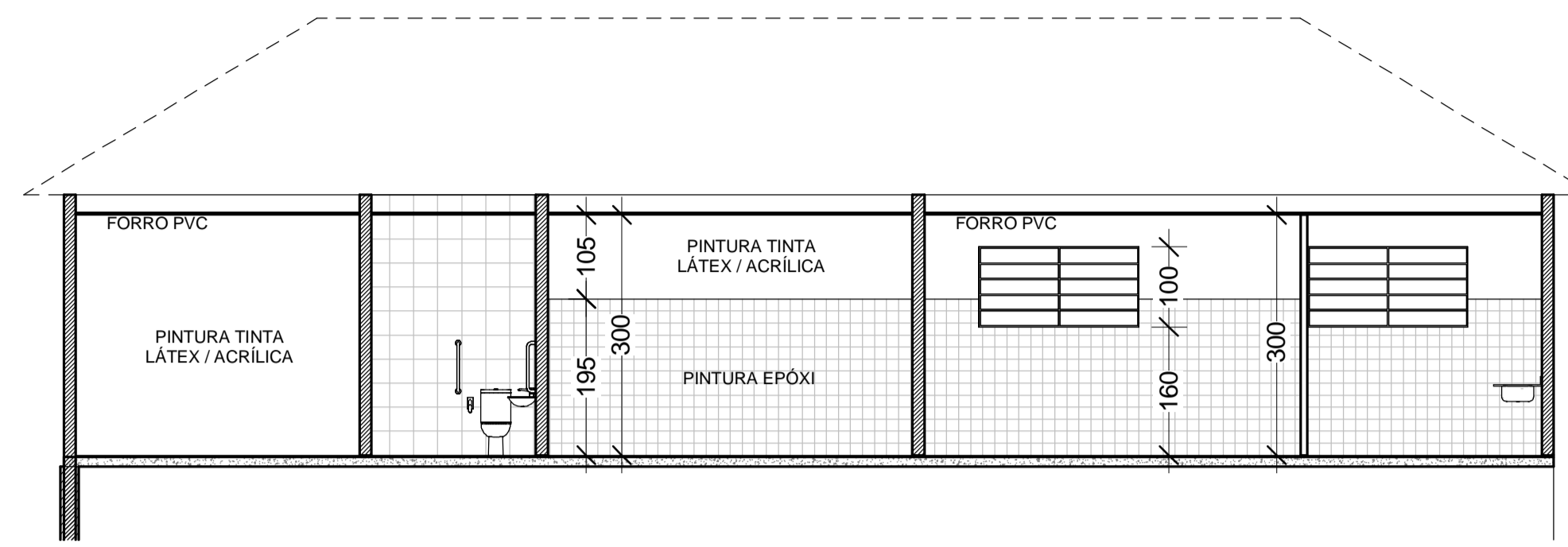
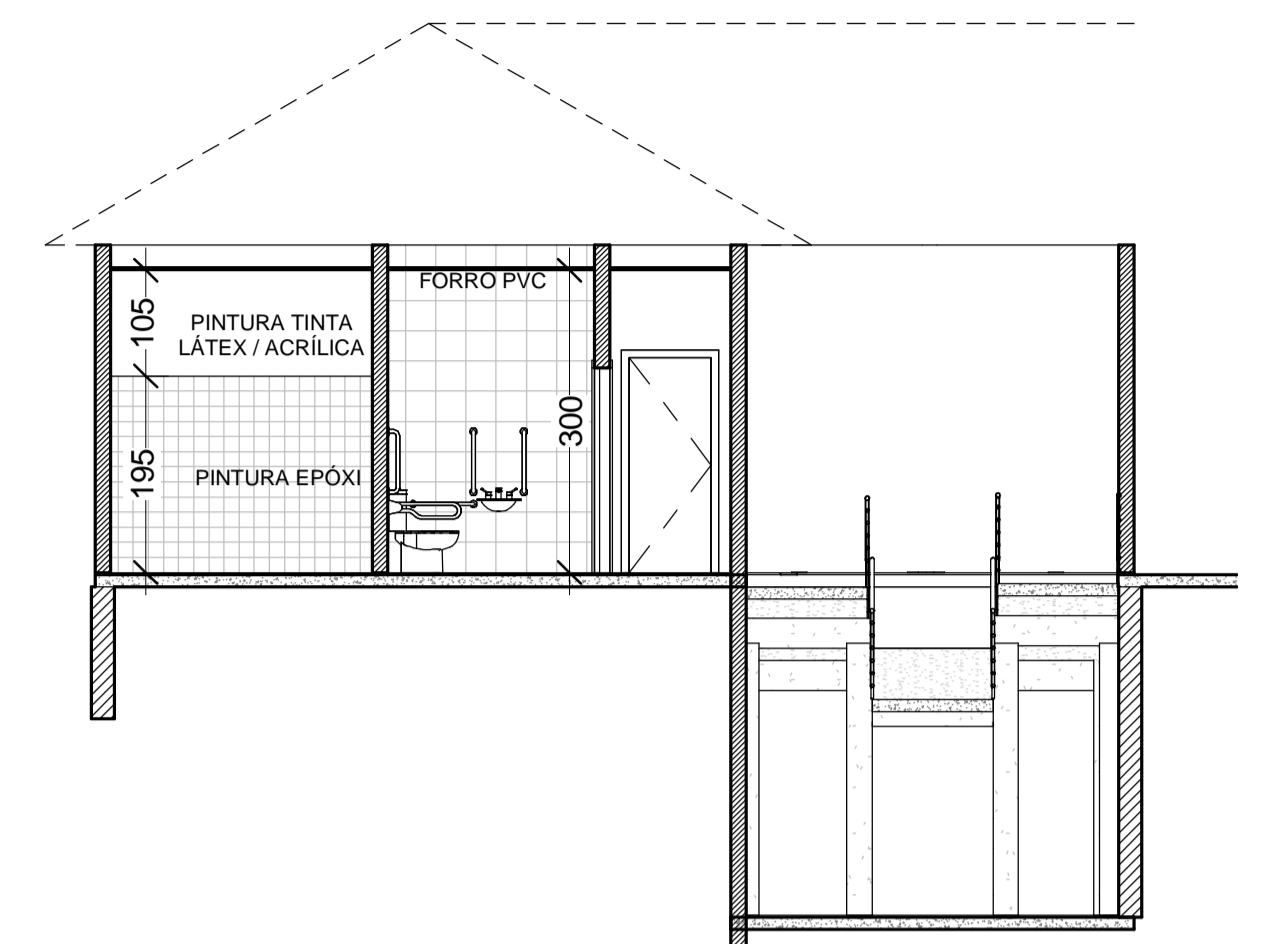


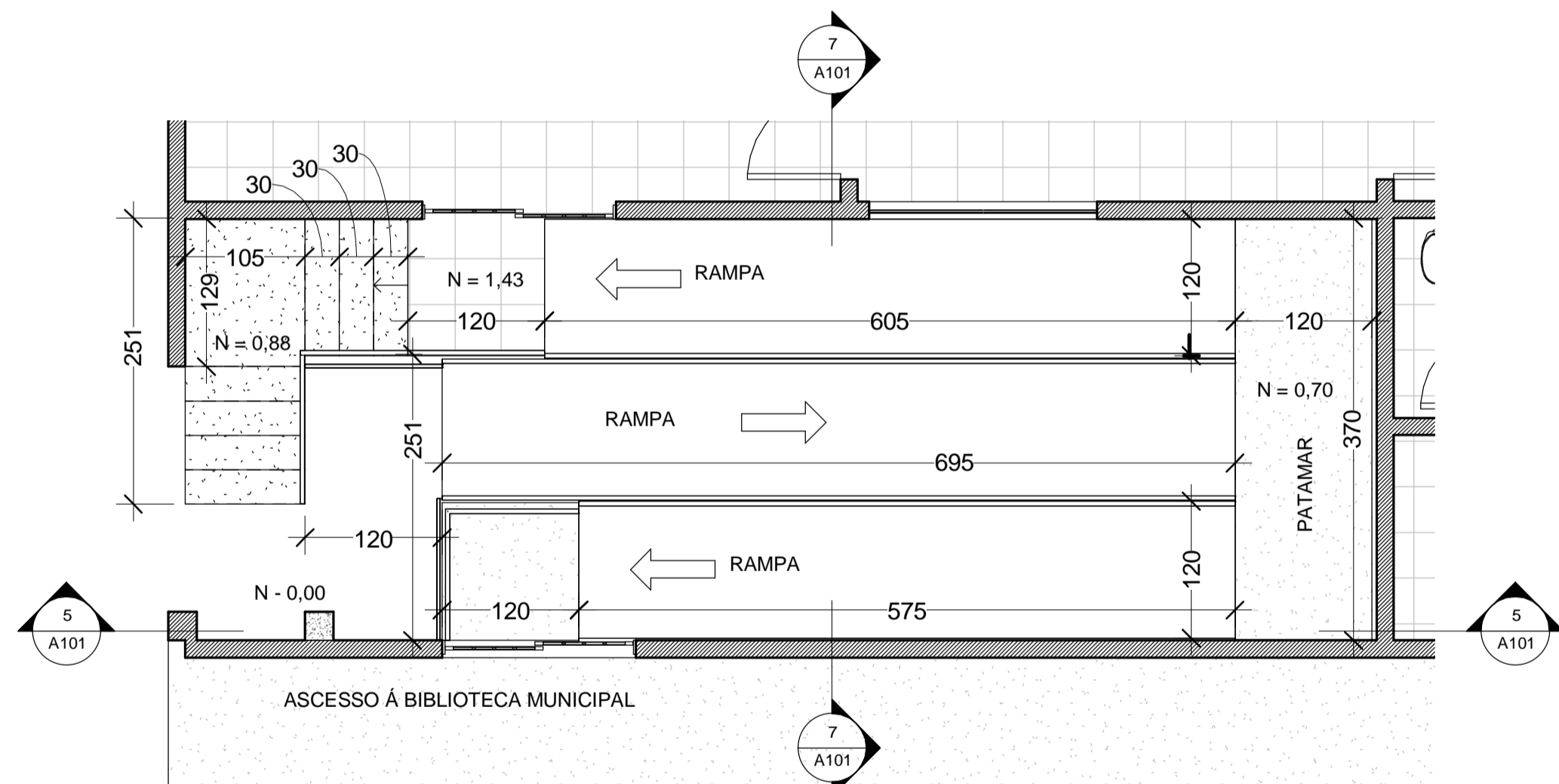
1 PLANTA BAIXA
1 : 75



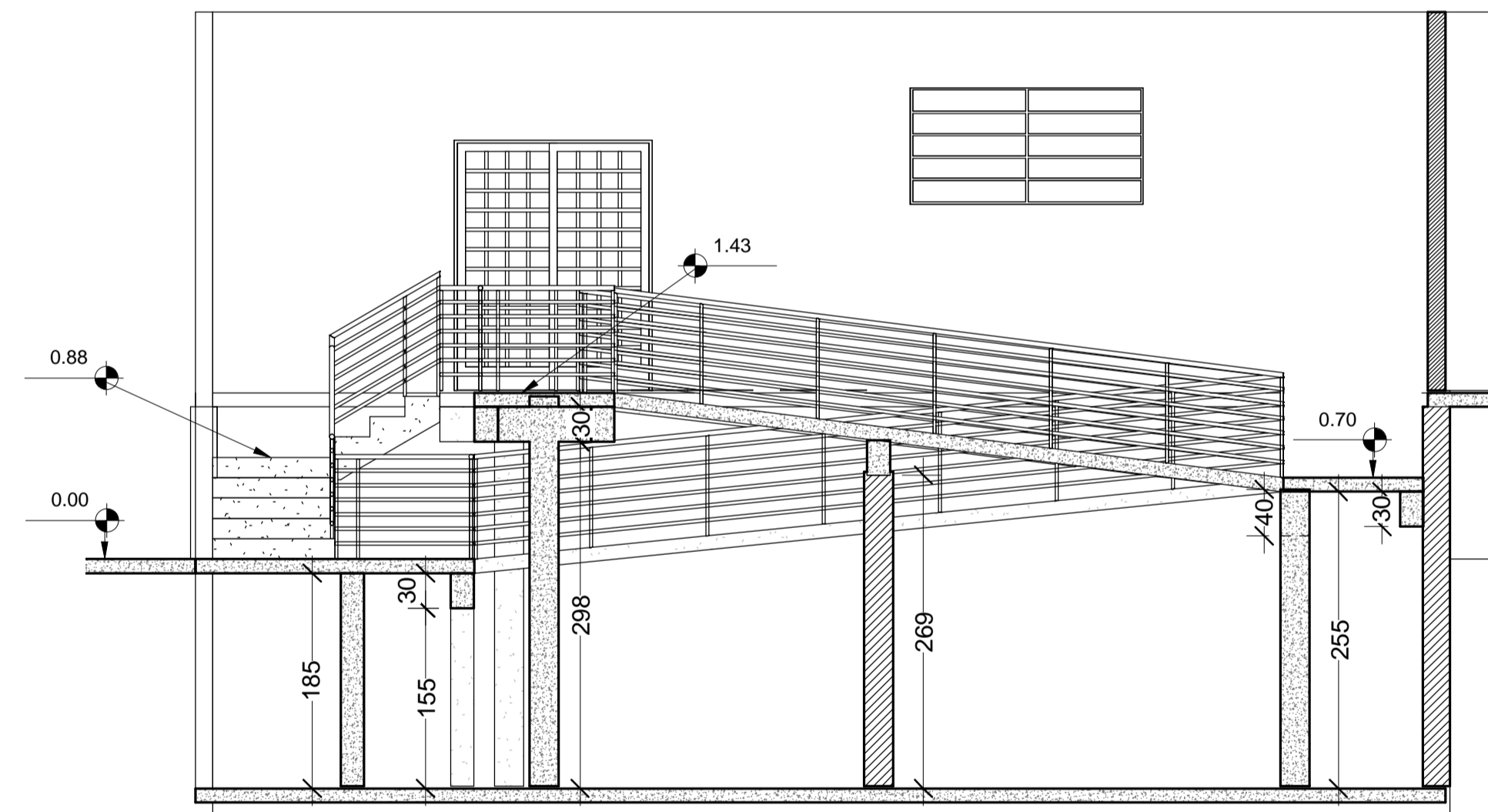
2 CORTE LONGITUDINAL
1 : 75



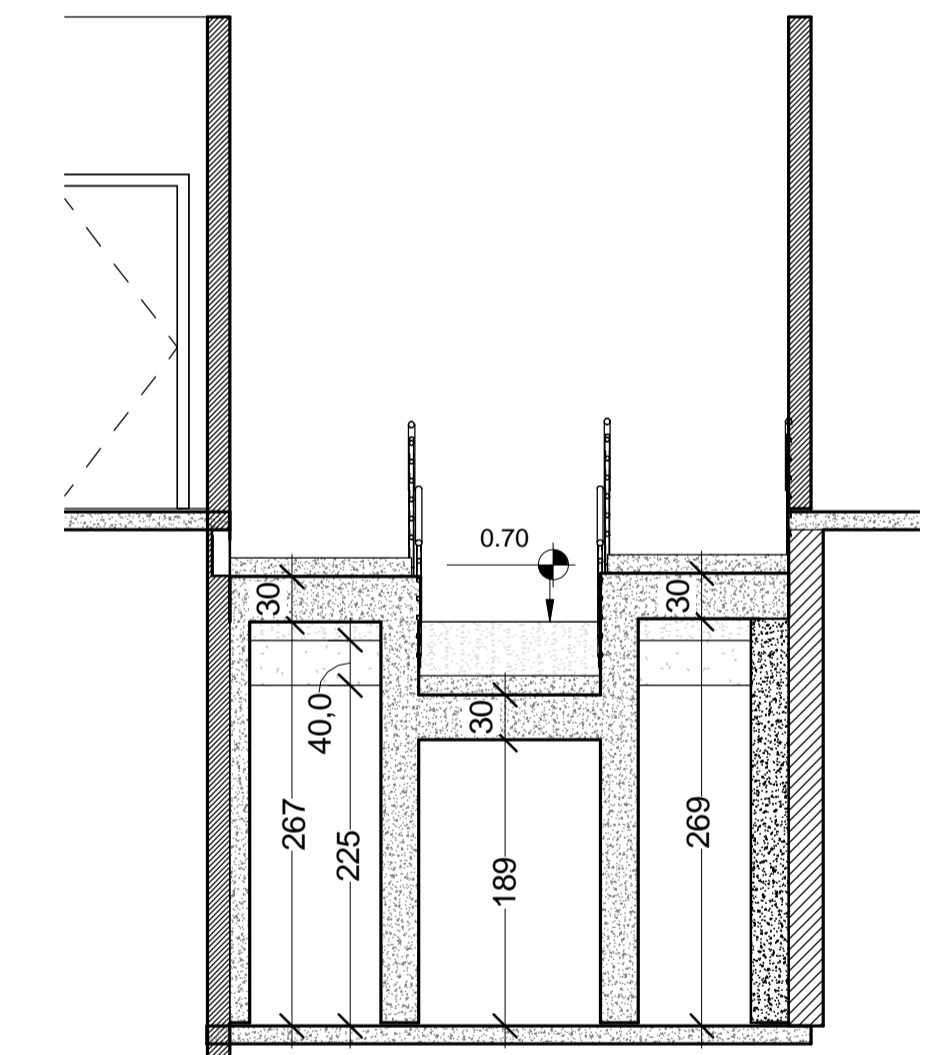
3 CORTE TRANSVESAL
1 : 75



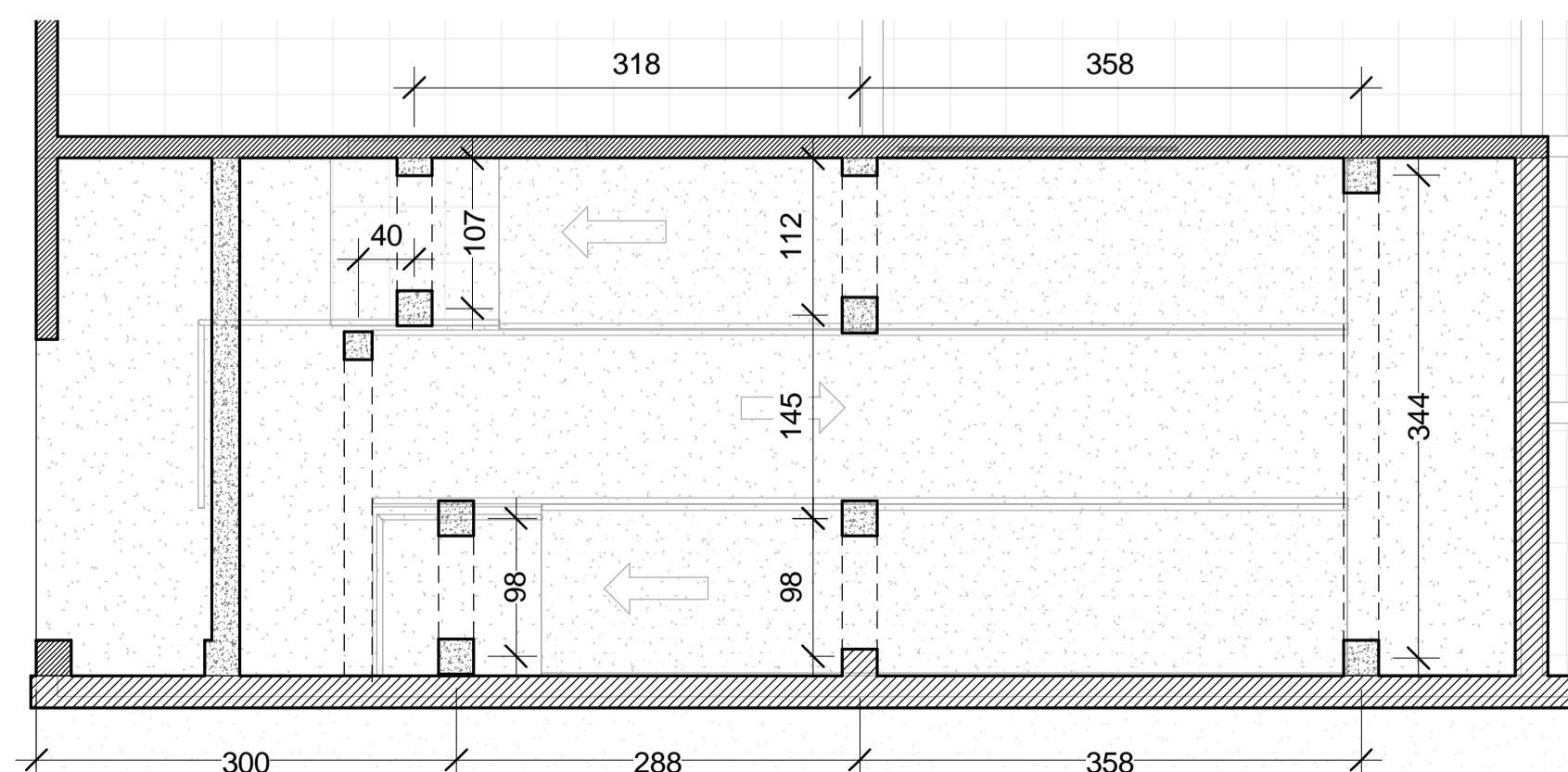
4 PLANTA BAIXA - RAMPA
1 : 50



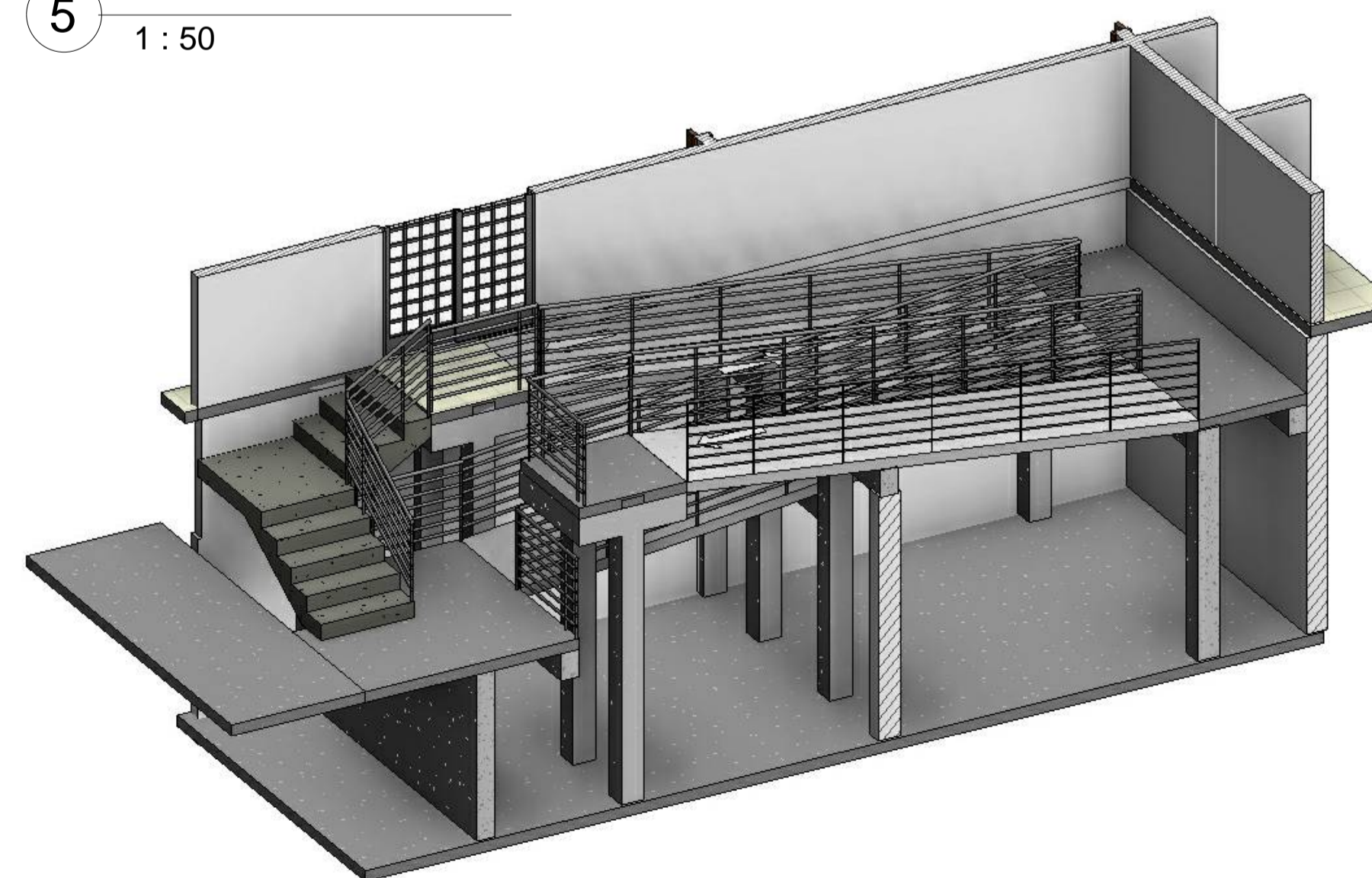
5 LONG. - RAMPA
1 : 50



7 TRANSV. RAMPA
1 : 50



6 LOCAÇÃO PILARES
1 : 50



Nº Revisão	Responsável Técnico	Data	Assinatura
GABRIEL SALDONES VILLELA - R.T. PREFEITURA Engenheiro Civil - CREA: MG 25494/D			
Conteúdo PLANTA BAIXA* CORTES* DETALHES			Área a Construída 152,50m²
Cliente Prefeitura Municipal de Minduri/MG EDMIR GERALDO SILVA			
Projeto Manutenção e Conservação da Secretaria Municipal de Saúde			
Endereço Avenida Getúlio Vargas, 55, centro, nesta cidade de Minduri/MG.			
FOLHA	A101	Desenho Rômulo Godinho	Data 05/07/2023 Escala Como indicado